



2023–2024

Jones Valley
Teaching Farm

IMPACT REPORT



*Food is our foundation;
people grow here.*

*Jones Valley Teaching
Farm uses food as a
foundation
so young people can
lead, create, and
grow a healthy future
for themselves and their
community.*

*We envision communities
inspired by food and
transformed by youth.*



In this year’s Impact Report, you will read about the incredible initiatives our team accomplished throughout the 2023 – 2024 academic year, and I think you will see why our work continues to be so important—vital, even. In this year’s letter, I’d like to focus on aspects of our work that are harder to quantify.

When we show up each day at Jones Valley Teaching Farm, we choose to create engaging educational opportunities, access to healthy, fresh food, and community connection. We offer spaces where **young people can question, challenge, and wonder out loud what kind of world they want to live in.** We create environments for volunteers, fellows, farm stand visitors, guests, teachers, students, and families to be *in* community with one another. We cultivate soil, grow food, and share it with our community. We believe wholeheartedly that when we show up in diverse and welcoming spaces—ready to open and stretch our hearts and minds—**we create a foundation of belonging, growth, and change.**

Thanks to you, Jones Valley Teaching Farm has the opportunity to witness this on a daily basis. We watch intergenerational connections spur community-based projects. We see interns stand in front of the Board of Education advocating for our expansion across the district. We hear the laughter of students from all over metro Birmingham as they explore and learn together during Camp Grow. We’ve been fortunate to have individuals representing 80+ zip codes receive seedlings, produce, or attend our workshops.

We proudly lead with our organizational values, which are: centering youth and young adults, radical care and well-being, inclusivity, continuous learning, growth, and teamwork. As you read about the impact we’ve made, I hope you take a moment to think deeply about how people *feel* while at our teaching farms, at our Center for Food Education, and in our work. Even though it is harder to quantify in numbers, we invite you to feel the sense of belonging that exists within the community we continue to build and join us as a volunteer, fellow, community partner, donor, visitor, and friend.

Sincerely,

Amanda Storey
Executive Director, Jones Valley Teaching Farm

A YEAR OF IMPACT: 2023-2024



OUR TEACHING FARMS



13

paid apprentices and
high school interns

4,517

students
reached

37

good community
food fellows

24,458

pounds of produce harvested

435

workshop participants

82,541

seedlings grown

80+

zipcodes served



GOOD SCHOOL FOOD

Launched in 2012, Good School Food is a food-based pre-K-12 education framework. Using cross-curricular experiential lessons aligned with Alabama state standards, students find joy in learning by using food, farming, and the culinary arts as a foundation for academic exploration and environmental stewardship. Good School Food results in positive academic engagement, healthier eating choices, and increased environmental stewardship.



IN- AND AFTER-SCHOOL INSTRUCTION

In partnership with Birmingham City Schools, JVTF farmers and instructors manage seven vibrant teaching farms located at elementary, middle, and high school campuses, with our eighth teaching farm completed in fall 2024 at Norwood Elementary. JVTF instructors collaborate with Birmingham City Schools teachers to deliver lessons that reinforce what students are learning in the classroom. These hands-on lessons span across all subject areas, including science, math, social studies, English Language Arts, health, and art. In the 2023-2024 academic year, **80% of lessons were tied to ELA and STEM standards** and teachers reported that Good School Food is “a true asset to our school environment” and lessons create opportunities for students to practice critical thinking, curiosity, and persistence.

Students also have the opportunity to join after-school programming through our Farm, Culinary, and Community Clubs. **100% of surveyed family members said their students were more excited to attend school on days with JVTF after-school programming.**



527

lessons delivered
to students from
40 schools

204

students attended
143 after-school
sessions

115

students from 39 schools attended
7 weeks of Camp Grow sessions

FIELD TRIPS + CAMP GROW

Offered at JVTF’s Center for Food Education in downtown Birmingham, field trips expand the reach of our Good School Food model to students from across Alabama. Lessons align with state standards and current learning objectives for visiting classes. Each spring and summer, Camp Grow provides students from across the Birmingham metro area with week-long experiences that highlight unique concepts related to agriculture, cooking, and sustainability. **77% of Camp Grow students received full scholarships and 99% of students reported feeling brave enough to try new things.**

“I made new food, tried new things, got to know new people, and faced my fears of bees and worms.”

— Camp Grow student on what they are most proud of accomplishing



YOUTH PATHWAYS & EXPERIENCES

JVTF's Youth Pathways and Experiences initiative offers Birmingham youth paid, work-based learning opportunities, training, enrichment experiences, and support services designed to help them explore and identify pathways to full-time employment or higher education.

HIGH SCHOOL INTERNSHIP

The internship is designed for high school juniors and seniors in Birmingham City Schools, providing them with paid, work-based learning opportunities, tailored support, and exposure to career and higher education pathways. Intern experiences are customized to their interests and include college tours, job shadowing, civic engagement opportunities, and meetings with local representatives.

In the 2023-2024 academic year, we expanded access to all Birmingham City Schools high schools and celebrated the graduation of 10 interns. Through a partnership with the Alabama Cooperative Extension System, interns participated in a registered 4-H Club, gaining monthly immersive agriculture experiences and access to scholarships.

COLLEGE CONNECT APPRENTICESHIP

The apprenticeship offers college students pursuing studies in agriculture, public health, nutrition, or related sciences the opportunity to deepen their knowledge and develop skills in creating community impact. The apprenticeship is a paid summer experience and eligible for college credit.



100%

of graduating high school interns transitioned to full-time employment or higher education

3 full-time apprentices

10 high school interns

2 former apprentices hired as full-time JVTF staff; 25% of JVTF staff are former Good School Food participants

“We are exposing a new demographic to agriculture and reclaiming how we feel about farming.”

— Karmin Matthews, JVTF high school intern



GOOD COMMUNITY FOOD

Launched in 2022 with funding from the USDA, Good Community Food is a citywide initiative to strengthen the local food system by increasing food access, providing agricultural skills-based training, and sharing resources with urban growers and community gardens. In the 2023-2024 academic year, we distributed **24,937 pounds of free produce—a 28% increase from 2022–2023**—via two farm stands at the Center for Food Education and Woodlawn High School, six pantry partners, and a CSA-style program in partnership with the YWCA and The Veranda at Park Place.

The Fellowship provided **37 fellows with raised beds and monthly training** related to agriculture, culinary, food justice, and community gardening management at the Center for Food Education.

In collaboration with the Alabama Cooperative Extension System, we hosted **13 free and reduced-cost public workshops** focusing on agriculture and culinary skills.

The Seedling Share program provided **29,111 free seedlings** to 40+ gardens **benefiting approximately 6,000 people in 26 zip codes**.

“I now eat veggies more simply and celebrate what they are, think through sourcing more intentionally, and grow more for my community.”

— Good Community Food Fellow

99% of workshop participants plan to use the information they learned in their personal or professional lives

\$100,000 estimated value of free produce distributed

FARMING & SUSTAINABILITY

JVTF has made significant strides in becoming a more sustainable organization, working to promote both a healthier environment and a stronger, more resilient operation. Through the adoption of no-till farming practices, our in-ground plots are effectively sequestering carbon, improving soil health, and minimizing erosion and runoff. At the Center for Food Education, we created a pollinator garden and have greatly enhanced our recycling and composting efforts.

JVTF is dedicated to organizational sustainability by offering professional development opportunities that empower our staff to grow and become the next generation of leaders who are committed to environmental stewardship.

382 unique crop varieties grown | **200** pounds of excess honey produced by **6** hives

100% of JVTF Teaching Farms are implementing low or no till practices



WORKSHOPS & CONSULTATIONS

JVTF is dedicated to creating communities inspired by food and transformed by youth. We strive to be a national leader in food-based education, sustainable urban farming, youth economic mobility, and building food-resilient communities.

Over the past year, JVTF staff collaborated with nonprofits, schools, and school systems from Gulf Shores, Alabama, to Tucson, Arizona, sharing their expertise and resources. By helping schools and communities adapt our place-based Good School Food educational framework, we not only generate essential earned income but also broaden our impact across diverse organizations and school systems.

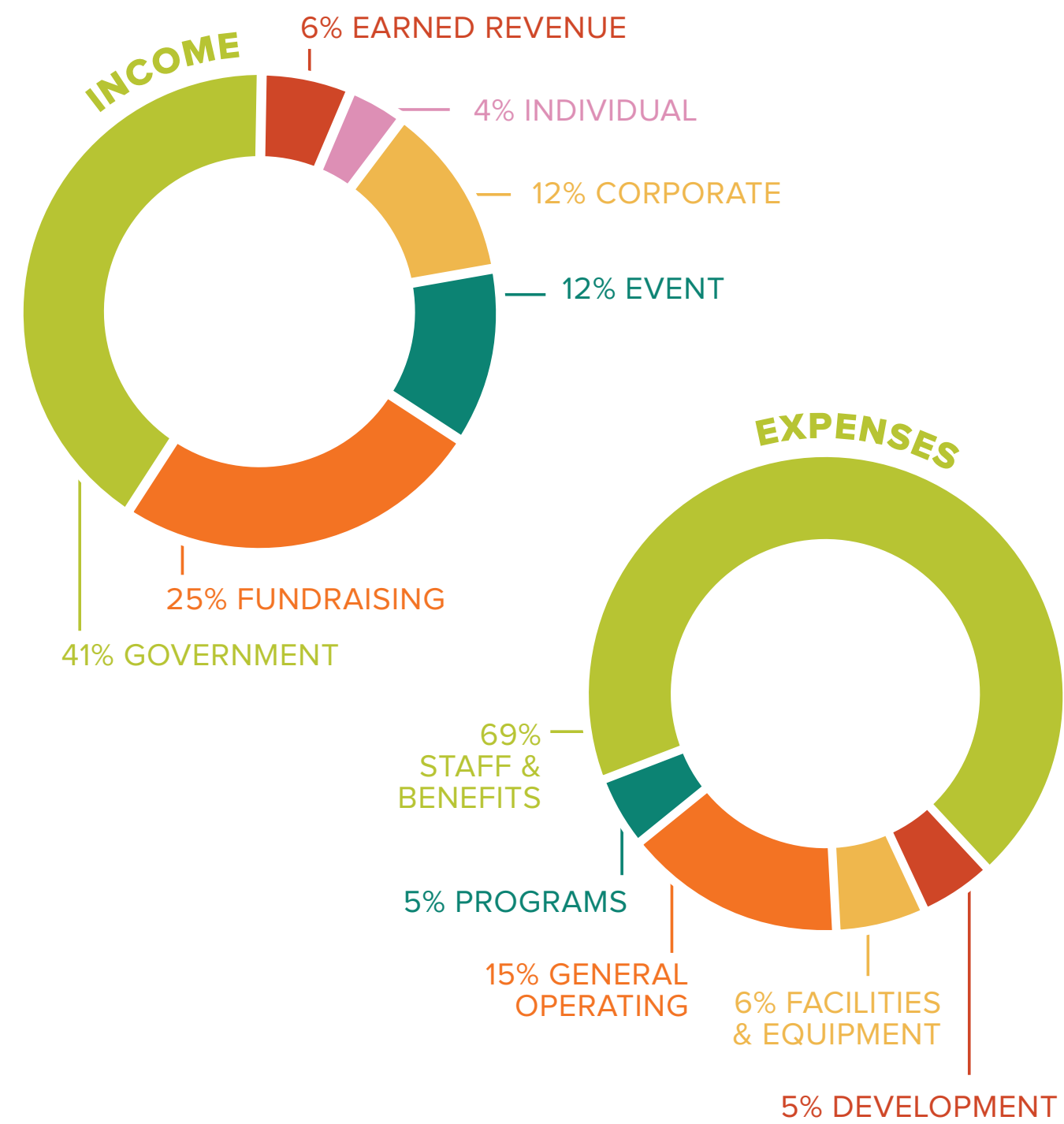
With funding from the USDA, JVTF piloted a unique professional development opportunity designed to equip child nutrition program (CNP) staff with strategies to increase student willingness to try new foods and increase CNP staff’s understanding of the seed-to-table path for food production. Over 90 CNP staff from Birmingham City Schools and Jefferson County Schools participated in the professional development and **85% of participants reported “gaining new knowledge that will help encourage students to try new foods and produce.”**

90 CNP leaders from across Jefferson County participated in culinary professional development

100% of CNP staff reported “I plan to use what I learned in the school where I work.”



FINANCIALS



80% of our expenses go directly to the people and resources that create and deliver our Good School Food, Youth Pathways and Experiences, and Good Community Food programs.

2023-24 SUPPORTERS

JVTF is grateful for the generosity of our many funders and partners who believe in our mission and support our work.

FUNDERS	
Alabama Power Foundation	Gracie Goodrich
ALFA Foundation	Goldenrod Fund
Altec/Styslinger Foundation	Hispanic and Immigrant Center of Alabama
American Heart Association	Hoar Construction
Anonymous	Holle Family Foundation
Mary Celeste Beall	Hugh Kaul Foundation
Big Lots Foundation	The Hunter-Jelks Fund
Birmingham City Council	Independent Presbyterian Church Foundation
Birmingham City Schools	James Rushton I Foundation
Birmingham Coca-Cola United Bottling Co.	Jefferson County Commission
Bradley Arant Boulton Cummings LLP	Jefferson County Farmers Federation
Brasfield & Gorrie	Jemison Investment Co.
Cynthia B. Brooks	Jeni's Splendid Ice Creams
The Caring Foundation of Blue Cross Blue Shield of Alabama	Jones Family Fund
CAWACO Resource Conservation and Development Council	Joseph S. Bruno Charitable Foundation
Cedar Tree Foundation	Junior League of Birmingham
City of Birmingham	KHA
Charles and Estelle Campbell Foundation	Kroger Delivery
Comer Foundation	Danny Markstein
Culver's	Medical Properties Trust, Inc.
Daniel Foundation of Alabama	Mike & Gillian Goodrich Foundation
Food and Wine: A Dotdash Meredith Company	Kathy & Len Morey
EBSCO Industries, Inc.	O'Neal Steel
Enterprise Holdings Foundation	Outside, Inc.
Mary & Addam Evans	Louisa & Paul Patterson
Gillian & Mike Goodrich	Marjorie Perlman
	Courtney & Jay Pigford
	PNC Bank
	PNC Foundation

Martin's Bar-B-Que
Protective Life Foundation
Publix Super Markets Charities
Lydia & Taylor Pursell
Representative Neil Rafferty
Regions Bank
Richard I Pigford Memorial Fund
Eva & Jim Robertson
Rojo
Rotaract Club of Birmingham
James Rushton
Joseph E. Sandner
Shipt
Fritz Spainhour
Spire Alabama Inc.
Sprouts Healthy Communities Foundation
State of Alabama
Courtney & Bryson Stephens
Hampton & Bart Stephens
Pardis & Frank Stitt
Susan Mott Webb Charitable Trust
TACALA Companies
Taco Bell Foundation
Target
United States Department of Agriculture
Verizon Wireless Foundation
Vulcan Materials Company
Wells Fargo Foundation
Wild Ones
H. Evan Zeiger & Margaret S. Zeiger Charitable Foundation
Zyne Family Foundation
IN-KIND PROGRAM PARTNERS
A Beautiful Life Enterprises

Alabama Cooperative Extension System
Auburn University
Anja Baxter
Bayles Catering & Restaurant
Birmingham Iron Workers Training Program Trust
Birmingham Promise
Biscuit Love
Wayne Boshell
Breakthrough Birmingham
City of Bessemer
City of Leeds
Collier's Nursery
CraneWorks
Dana's Cake Creations
Dash Solutions
Desert Island Supply Co.
Roscoe Hall
HudsonAlpha Institute for Biotechnology
IBEW Local 136
Jefferson County Department of Health
Jefferson County Soil and Water Conservation District
Jefferson County Stormwater Program
Keep Birmingham Beautiful
KultureCity
The Leaf Pantry and Urban Farm
Ayanava Majumdar
O'Neal Steel
Pihakis Restaurant Group
PREX Supply Co.
ReadyMix USA
School Garden Workshop

This funders list includes single gifts of \$1,000 and above received between August 1, 2023, and July 31, 2024. It is important that this list is accurate and honors the requests of donors who wish to remain anonymous. If you find an error, please accept our apology and allow us to correct it by contacting our Development Department at nicole@jvtf.org.

SiteOne Landscape Supply
Soil3 Organic
Sprouts Farmers Market
Storm Water Management Authority, Inc.
Turner Construction Company
United Way Hands-On
Valley Bank
Veranda at Park Place
Vulcan Materials Company
Watermark Farms
David West
Stephen Williams
YWCA Central Alabama: Family Resource Center

TWILIGHT SUPPER EVENT PARTNERS

Presented by PNC Bank

Automatic Seafood and Oysters
Bristow Gin
Cathead Distillery
Rob Culpepper
Decor to Adore
Dryft Coffee
El Tesoro Tequila
Evans Meats & Seafood
Fresh Face Flowers
Harvest Roots Kombucha
Heck Hospitality
Local Link
Mi Pueblo Supermarket
Southern Company

Sysco Foods
Telegraph Creative
Tre Luna Catering
TrimTab Brewing Company
Vineyard Brands
Wonderbird Spirits

VOLUNTEERS OF THE YEAR

Bill Carroll
Charles Kellum

HARVEST CIRCLE

JVTF's giving circle

Courtney & Rip Andrews
Beth & Chandler Bailey
Taylor & Matthew Brown
Jenny & Turner Burton
Carmen & Trey Echols
Madeline Eckenrode & Mike Soike
Mary & Braxton Goodrich
Kelly & John Harbert
Alexis Lobodocky & Wynn Giles
Marion & Edgar Marx
Amy & Danny McKinney
Lee & Bob Methvin
Mary Catherine & Travis Pritchett
Sarah & Dave Stewart
Heidi & Jason Teter
Sue & Nick Willis
Caroline & Tom Yeilding

2024 BOARD OF DIRECTORS

Eva Robertson, Board Chair, Community Volunteer

Will Clark, Altec Inc.

Trey Echols, Highland Associates

Silvia Espinosa-Lawson, Hispanic and Immigrant Center of Alabama

Charles Esther Kellum, Community Volunteer

Shirley Fagan, O'Neal Industries

Lisa von Feldt, Shipt

Brandon Glover, Alabama Power Company

Braxton Goodrich, Timberline Holdings

Joe Hampton, Spire Inc.

Rosa Hooper, Medical Properties Trust

Kendra Key, Regions Financial

Hunter Lewis, Food & Wine Magazine

Danny McKinney, McKinney Capital

Erin Morgan, Regions Financial

Taylor Pursell, Pursell Agri-Tech

Dave Stewart, Bradley Arant Boult Cummings

Frank Stitt, Stitt Restaurant Group

Pardis Stitt, Stitt Restaurant Group

Mashonda Taylor, Woodlawn United

Jason Teter, Community Volunteer

Nick Willis, PNC Bank

Carita Venable, Southern Regional Education Board

Caroline Yeilding, Morgan Stanley



**JONES
VALLEY**

teaching farm

jvtf.org